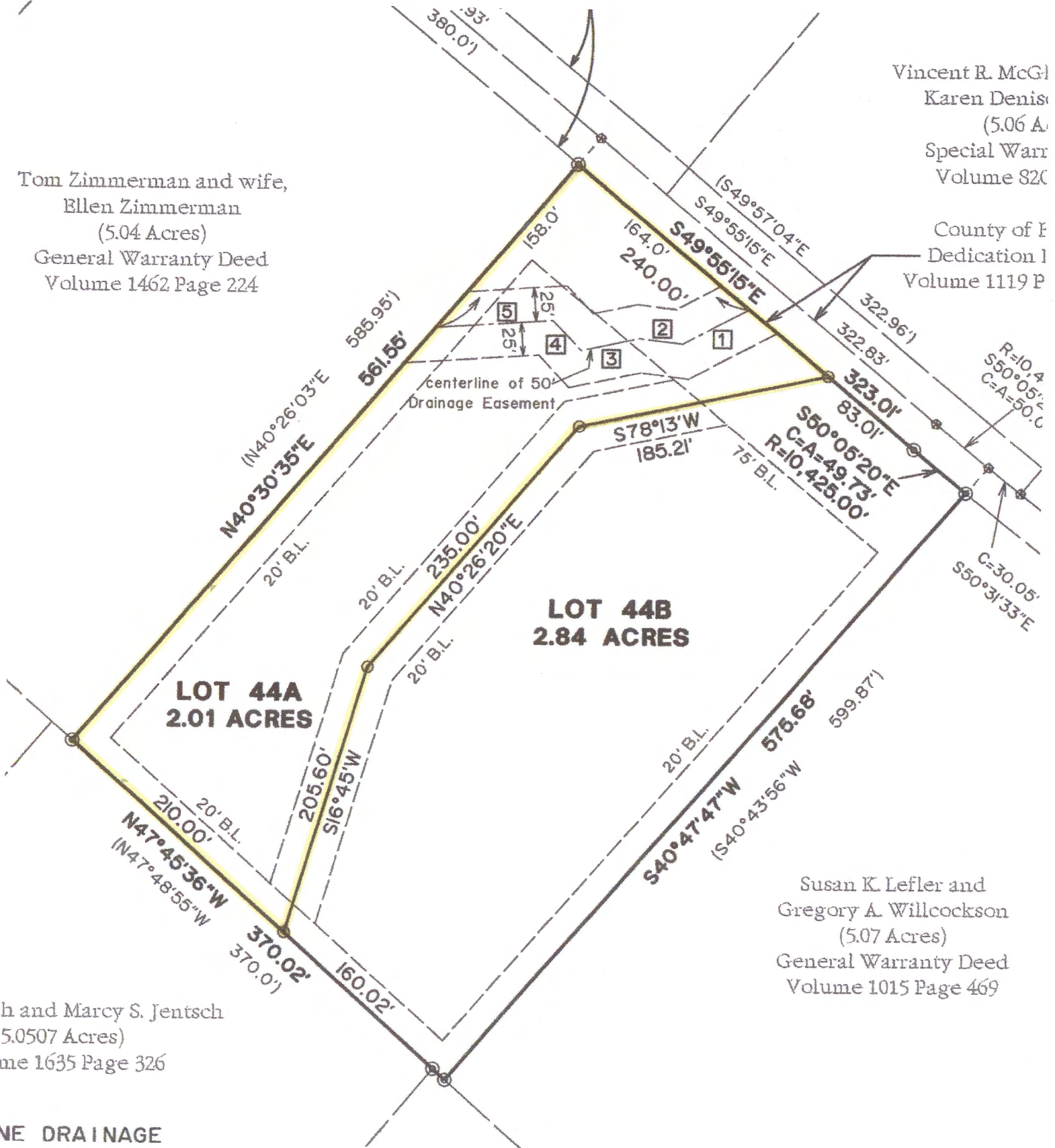


Tom Zimmerman and wife,  
Ellen Zimmerman  
(5.04 Acres)  
General Warranty Deed  
Volume 1462 Page 224

Vincent R. McGl  
Karen Denis  
(5.06 A.  
Special Warr  
Volume 820

County of F  
Dedication I  
Volume 1119 P



h and Marcy S. Jentsch  
(5.0507 Acres)  
Volume 1635 Page 326

Susan K. Lefler and  
Gregory A. Willcockson  
(5.07 Acres)  
General Warranty Deed  
Volume 1015 Page 469

NE DRAINAGE